

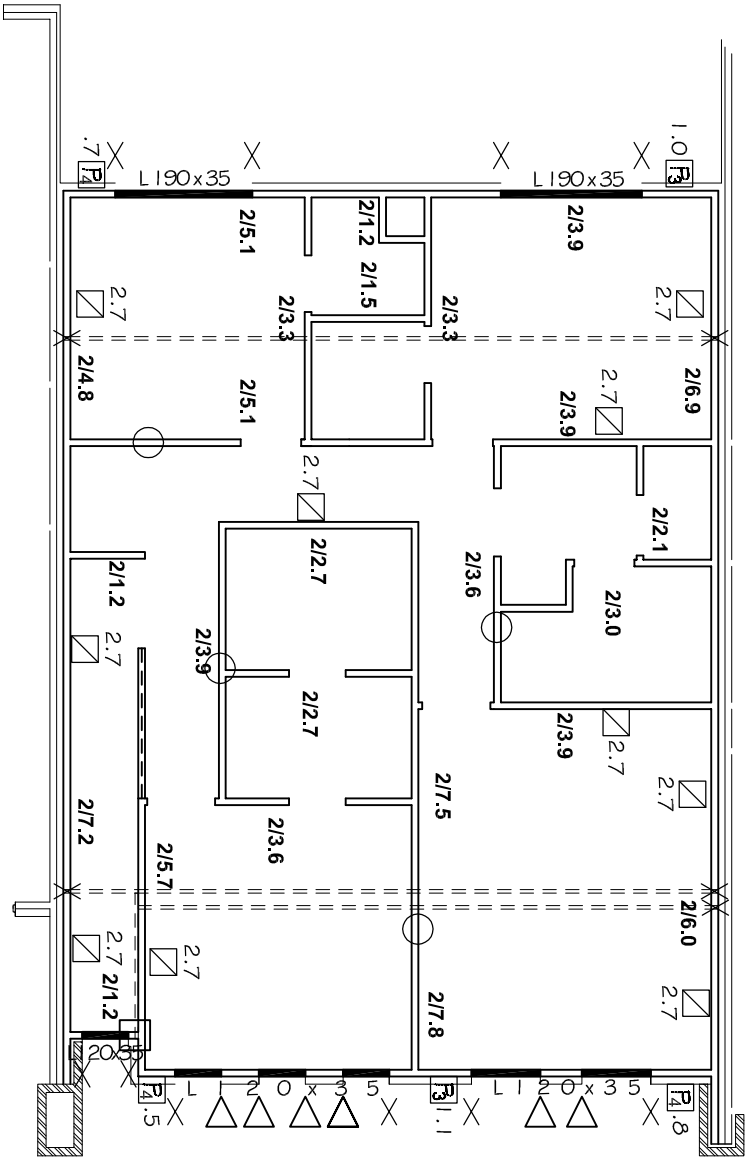
UPPER WALL FRAME LAYOUT

CEILING HEIGHT - 2700mm


STRUCTURAL DETAILS

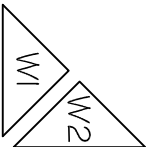
- T & B PLATES 90x35 MGP10 UNO
- EXTERNAL STUDS 90x35 MGP10 @ 600 CTS UNO
- STUDS POSITIONED DIRECTLY BENEATH RAFTER/RUSS @ MAX 600MM CTS
- INTERNAL STUDS 90x35 MGP10 @ 600 CTS UNO
- STRUTS BLOCKED OVER 2 SINGLE 90x45 MGP10 STUDS
- BLOCKING 90x70 MGP10
- NOGGING 90x35 PINE @ 1350 MAX CTS
- 1/90x35 MGP10 DIRECTLY BENEATH INTERNAL SUPPORT
- ALL STRUCTURAL MATERIAL TO BE MGP10, UNO.
- JOINT GROUP=JD5
- ALL MATERIALS ALLOWED AS PER AS 1684.2-2010
- NON-LOAD BEARING WALLS UNDER TRUSSES SET DOWN 20mm
- STUDS AT SIDES OF OPENINGS AND POINT LOAD STUDS AS SHOWN BELOW

- △ = 1/90x45 MGP10
- X = 2/90x35 MGP10
- = 2/90x45 MGP10



DWELLING 2

DEDICATED DEVELOPMENTS	BOJACK		AMENDMENTS	SHEET 4/6		OAKRIDGE BUILDING SERVICES	WINDSPEED (per residence) : N I
	638 BURBRIDGE RD, WEST BEACH			DATE : 14/02/19			
	Detailer: Matt Opie			SCALE: 1 : 100			
	Signed: 			JOB No. TTO23398			
					PH : 83837222	FAX : 83837225
						
						
						
						
						
						
						
						
						
						
						
						
						
						
						
						
						
						
						
						
						
						
						
						
						
						
						
						
						
						
						
						
						
						
						
						
						
						
						
						
						
						
						
						
						
						
						
						
						
						
						
						
						
						
						
						
						
						
						
						
						
						
						
						
						
						
						
						
						
						
						
						
						
						
						
						
						
						
						
						
						
						
						
						
						
						
						
						
						
						
						
						
						
						
						
						
						
						
						
						
						
						
						
						
						
						
						
						
						
						
						
						
						
						
						
						
						
						
						
						
						
						
						
						
						
						
						
						
						
						
						
						
						
						
						
						
						
						
						
						
						
						
						
						



TOP PLATE FIXING DETAILS - PARALLEL TO WALL - TABLE B.22 (C) 		
* 6/3.05 DIAM. NAILS - 5.0kN		
TOP PLATE FIXING DETAILS - PERP. TO WALL - TABLE B.22 (I) 		
* 6/3.05 DIAM. NAILS - 5.0kN		
* 3/16.14 TYPE I17 SCREWS - 1.0kN		
BRACING UNITS		
METAL ANGLE BRACE - TABLE B.18 (C) 		
□ - 1800mm (2.7kN)	□ - 2100mm (3.15kN)	
□ - 2400mm (3.6kN)	□ - 2700mm (4.05kN)	
OS BRACE TYPE #3 SYSTEM 6.0kN/m OR EQUIVALENT 		
□ - 900mm (5.4kN)	□ - 1200mm (7.2kN)	
OS BRACE TYPE #4 SHORT WALL BRACING SYSTEM 2.2kN/m OR EQUIVALENT 		
□ - 450mm (1.0kN)	□ - 600mm (1.3kN)	
O ADDITIONAL ANGLE BRACE		
WINDSPEED (per residence) :		
W1	45 m² =	25 kN
W2	25 m² =	14 kN